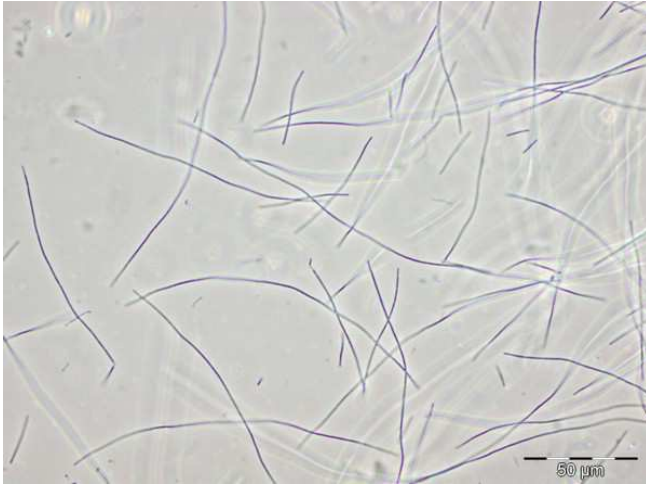


Cultures for breeding micro algae *Xxx-8*



www.aquacare.de
AquaCare GmbH & Co. KG
Am Wiesenbusch 11 - D-45966 Gladbeck - Germany
☎ +49 - 20 43 - 37 57 58-0 • 📠 +49 - 20 43 - 37 57 58-90
www.aquacare.de • e-mail: info@aquacare.de



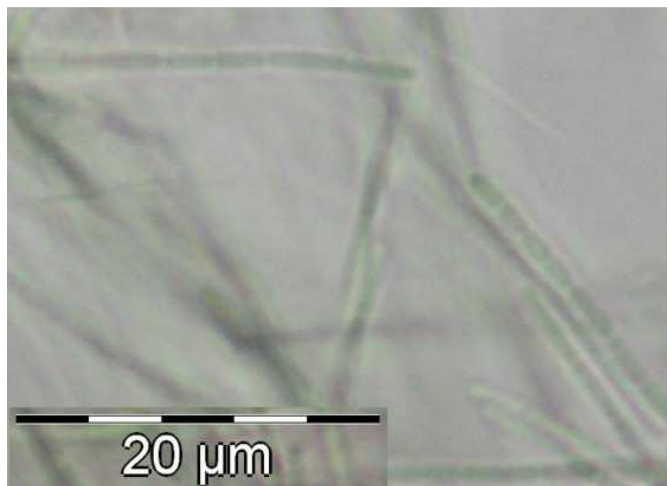
Xxx-8 (phase contrast)



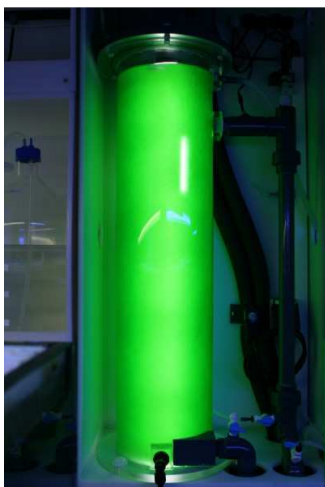
Xxx-8 (dark field)



Xxx-8 (bright field)



Xxx-8 (clipping magnification)



Xxx-8 with high density
in a 22-litres algae reactor

Version	11.2017
Species	unkown (maybe a cyano bacterium = blue green algae)
Class	
General description	dark blue-green autotrophic organism, long strings with 2-3 µm divisions; no active movement
Size	length: 5...500 µm; wide: < 1µm
Ingredients	at least EPA (C20:5n3) is formed
Colour of culture	dark blue-green at N-P-lack yellow to orange
Effort of cultivation	low
Characteristic of cultivation	is growing fast and is able to overgrow other algae cultures; with a lack of nitrogen and phosphorous the culture tends to flocculate
Cultivation in	algae aquarium algae tube algae reactor
Lighting	fluorescen lights, energy saving lamps, daylight, different spectra possible day / night from 10:2 h12:12 h;
Aeration / circulation	less ... strong extrem rigid against shear forces
CO ₂ fertilization	possible (best grow) but not necessary (less effort)
Range of pH value	7.5 ... 9.5
Range of temperature	up to about 30°C
Range of salinity	AquaCare is cultivating at 35/1000 maximum: > 110/1000
Kind and concentration of medium	algae medium (N:P = 10:1): 1 ... 100fach;
Backup culture	Window seat culture: cool; dived and fill up with 10fold medium every some month, shaking daily; shaker culture: dived and fill up with 10fold medium every some month; refrigerator culture: wake up the culture very carefully: equal temperature for minimum 24 hours at diminished lights, after it dilute the culture carfully with 1fold medium
Suitable for	<i>Artemia</i> spec., all stages from nauplius to adultus <i>Brachionus</i> spec. SS- to L-type