

# Care and Breed

## - useful accessories -



www.aquacare.de

AquaCare GmbH & Co. KG

Am Wiesenbusch 11 • D-45966 Gladbeck • Germany

☎ 0 20 43 - 37 57 58-0 • 📠 0 20 43 - 37 57 58-90

www.aquacare.de • info@aquacare.de



*Aptasia-Ex*: a set with mixing container, syringe with drain tube, calcium hydroxide powder and manual.  
order number: EX-001

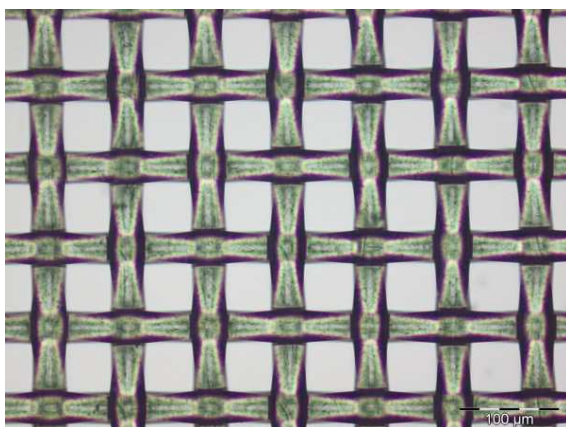
### *Aptasia-Ex*

**Set for exterminating *Aiptasia*, anemones, sponges, button polyps, mushroom polyps and other unwanted animals**

Invertebrates like anemones, sponges, button polyps and mushroom polyps are welcome if they occur as single animal or in small groups. But it is possible that they proliferate to large carpets that overgrow or nettles other animals. From aquarium to aquarium different invaders can attack. The most unwanted animals are: *Aiptasia*, *Anemonia* cf. *ma(n)jano*, *Collospongia auris*, *Zoanthus* spec. *Discosoma* spec., *Rhodactis* spec.. All these animals are very beautiful but if they overgrow the half aquarium you will hate them like poison.

It is very important that you act before the half aquarium is occupied by the invaders. The battle against them is long-winded and complicated - and if you fight to quickly against them the whole life in your aquarium is threatened.

### Large plankton screens from 6 to 2000 µm



Plankton sieves are used normally for plankton breeding. The sample to be screened should be poured carefully through the screen: all particles and organisms large than the filtration size are hold back, the water and smaller particles will flow through. The AquaCare screens have a large diameter (100 or 200 mm) to uptake big volumes. The screen body is made of PMMA (perspex), the web of PA (polyamide) - so the product is fully usable for sea water.

Order number	Fineness	open area	Order number	Fineness	open area
Sieb200(100)/006/5	6 µm	5%	Sieb200(100)/150/41	150 µm	51%
Sieb200(100)/015/10	15 µm	10%	Sieb200(100)/200/54	200 µm	54%
Sieb200(100)/025/19	25 µm	19%	Sieb200(100)/500/47	500 µm	47%
Sieb200(100)/050/37	50 µm	37%	Sieb200(100)/1000/57	1000 µm	57%
Sieb200(100)/100/49	100 µm	49%	Sieb200(100)/2000/57	2000 µm	57%

### Disinfection system

There are some application cases that needs a careful disinfection. If other methods like heating (pasteurizing, autoclaving), irradiating with energy-rich electromagnetic waves (gamma rays, X-rays) or UV light are not suitable or too dangerous the chemical disinfection is the only choice.

The AquaCare disinfecting solution is working with the chlorine dioxide method - do not mix up with chlorine gas or hypo-chloride method! Chlorine dioxide has the distinction of killing steady algae, bacteria, viruses, spores, fungi and protozoa. Chlorine dioxide has a 2.5 time larger oxidation power than per-acetic acid, hydrogen peroxide, sodium hypochlorite or gaseous chlorine. It is much more faster reacting than chlorine and is suitable in a wide pH range of 6.5 and 9.5. The deposit effect enables this chemical to destroy bio-film. Odorants like phenols and algae decomposition products will be oxidized. In contrast to the chlorine method the chlorine dioxide methods do not form halogenated substances like THM, chlorine phenols, AOX, chlorine amines: no reaction with primary, secondary and quaternary amines.



Set for producing 400 liters of disinfection solution consisting of:  
 2 × fluid component,  
 2 × powder component,  
 5 ml-Syringe,  
 order numer EX-002

The AquaCare disinfection solution is suitable for aquaria, container for breeding micro-algae or plankton, for defrosting of frozen food, for steady disinfection and for membrane disinfection.



### Plankton tube

You can use the AquaCare plankton tube for breeding phytoplankton (in combination with light; best are T5 fluorescence lamps) and zooplankton. The large netto volume of 4 liters enables a fast growth of the organisms. The system is airtight (phytoplankton tube); for disinfecting you may use e.g. chlorine dioxide.

The phytoplankton tube consists of a acrylic cylinder with a conical bottom and a closure. There are two connectors (4 mm nozzles) for aerating and de-aerating the culture. Two brackets for wall mounting are in the scope of delivery.

The zooplankton tube includes two additional connectors and a paddle scraper made of stainless steel. Detritus and other sediments are removed to suck away with a hose.



spare parts of the head



complete zooplankton head



acrylic cylinder with cone and paddle scraper



zooplankton tube with adult *Artemia* „salina“, fed with the diatom *Phaeodactylum tricorutum*

Order number phytoplankton tube: Pkt90-90

Order number zooplankton tube: Pkt90-90z

Diameter: 90 mm

Volume total / netto: 4.6 / 4.0 Liter

Height / required space: 905 / 950 mm (others are possible)

Materials: PMMA (acrylic glass), ABS, O-ring made of NBR, PA-fittings, special stainless steel extra thick silicone hose 4/7

mm; best for reactors and plankton tubes; order number (per meter): 893-005



Hydrophobic sterile filter for aeration of plankton tubes with 0.45  $\mu\text{m}$  pores and extra large surface (16  $\text{cm}^2$ ), rejection of 99.97% of all particles > 0,3  $\mu\text{m}$ ; connection

nozzles for 6-10 mm hoses; membrane made of PTFE, housing made of PP. The filter should be protected against large particles (dust).

Order number: EX-003

Extra large cleaning brush e.g. for plankton tubes

Diameter: 30 mm

Border length: 125 mm

Total length: 900 mm

Order number: Brst-001

