

# Floating Valves

Simply controlling the water level



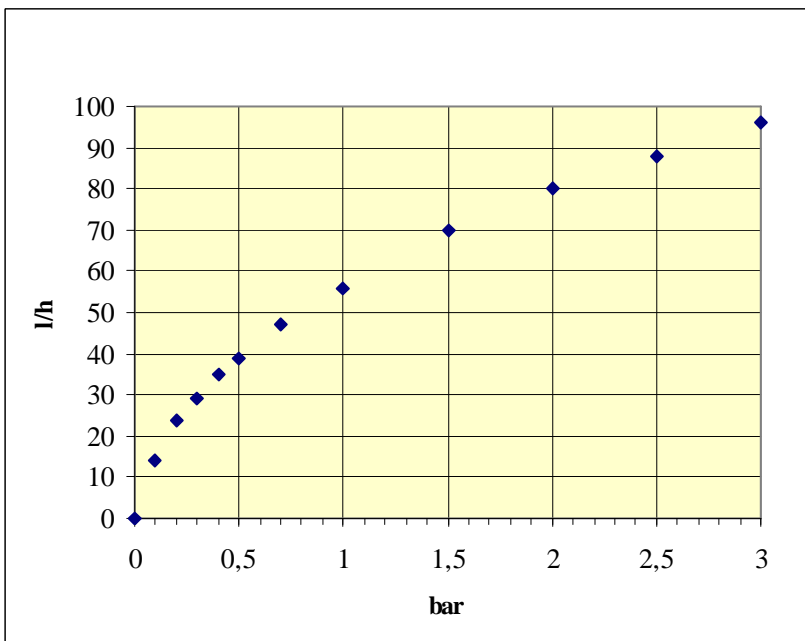
AquaCare GmbH & Co. KG  
Am Wiesenbusch 11 • D-45966 Gladbeck • Germany  
☎ 0 20 43 - 37 57 58-0 • 📠 0 20 43 - 37 57 58-90  
www.aquacare.de • info@aquacare.de



Plastic floating valve with vertical attachment and adjustable float

## Diagram

## Field of Application:



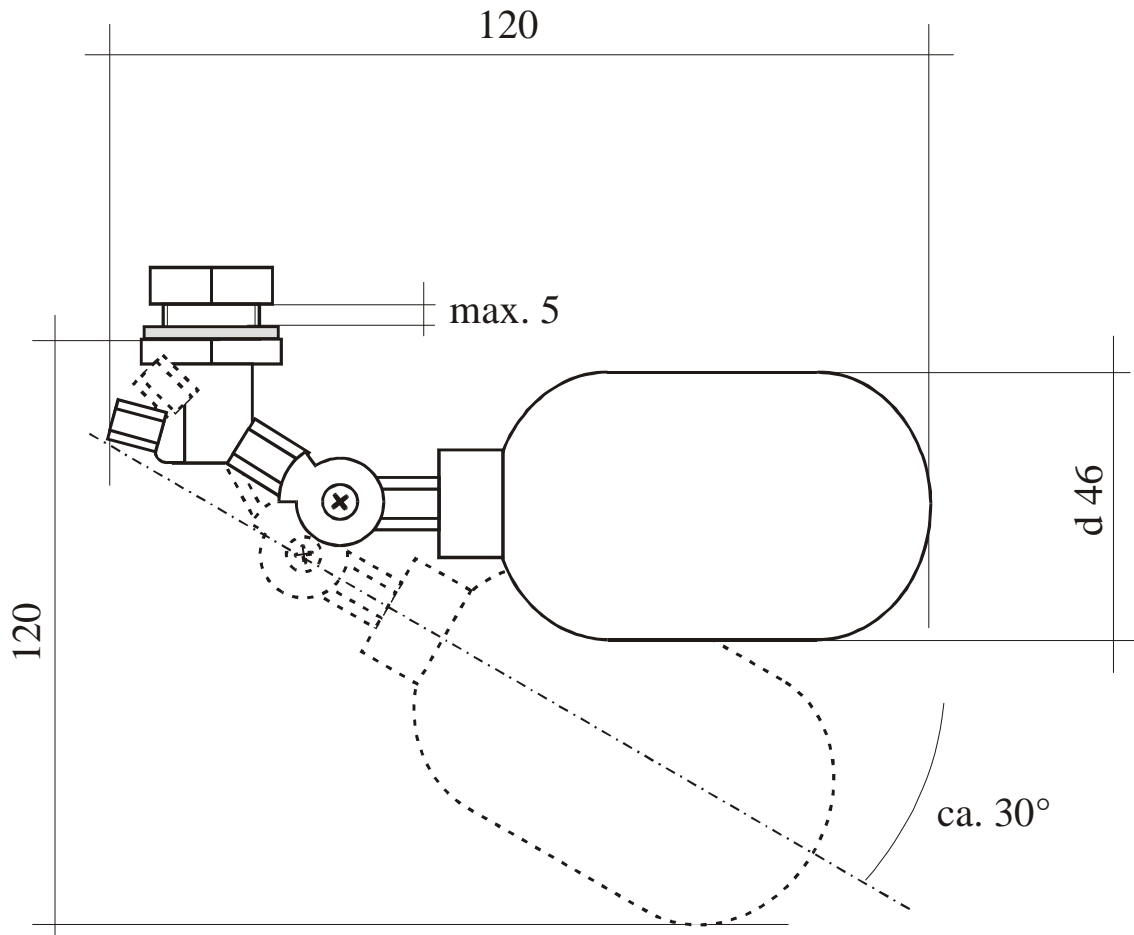
- Refilling of particle-free water
- Ideally for aquariums (fresh and sea water) and filter basins
- Vertical attachment

Water flow versus water pressure (at 20°C)

## Technical Data

|   |                                |
|---|--------------------------------|
| Type of attachment                            | vertical                       |
| Order number                                  | 896-012                        |
| Dimension of float (D x L) in mm              | 52 x 92                        |
| Space requirements of valve (H x W x D) in mm | 135 x 110 x 52                 |
| Diameter of nozzle in mm                      | 1,4                            |
| Material of float                             | Polypropylene (PP)             |
| Material of lever and connecting thread       | Polypropylene (PP)             |
| Seal for attachment                           | Silicone                       |
| Seal in valve                                 | Silicone                       |
| connection                                    | 1/8" female thread             |
| Required drilling in mm                       | 15.5...18 or PG9 female thread |
| Maximum wall thickness                        | 5 mm                           |
| Maximum water pressure in bar (in psi)        | 4.0 (60)                       |
| Maximum temperature                           | 40°                            |
| Weight in g                                   | 37                             |

## Dimensional Drawings



Float valve, order number: 896-006