

# Autotrophic De-Nitrification Reactor ADN

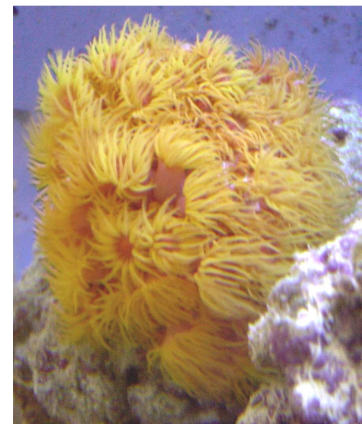


AquaCare GmbH & Co. KG  
www.aquacare-shop.de • info@aquacare.de

- the safe nitrate filter -



Nitrate will accumulate in aquaria very fast if you feed many fishes. Concentrations over 20 mg/l (ppm) should not be tolerated. The AquaCare ADN filter is very safe because the specialized bacteria reduce the nitrate autotrophically. This means that organic feeding substance are not necessary – the bacteria population



If you feed corals like *Tubastrea* spec. much nitrate will accumulate. So nitrate elimination is necessary.

growths on a special sulphur substrate. The AquaCare

ADN filter has following advantages:

- intensive mixing with a rigid circulation pump – therefore the efficiency will rise
- high water inlet flows are possible
- long life of the sulphur substrate
- easy de-aeration
- low biomass production – therefore low organic pollution in the aquarium water
- redox (ORP) controll possible (option)

## Technical data of the AquaCare ADN filter: 75 ... 100

Size	ADN 75	ADN 100-50	ADN 100-70	ADN 100-100
Order number	300-008	ADN100-50	ADN100-70	ADN100-100
max. aquarium size	1,000	2,400	3,700	5,700
Diameter, mm	75	100		
Sulfur substrate, litres	1.0	2.5	3.8	5.8
Height total, cm*	45	50	70	100
Minimum space for filter*	+5 cm			
Foot print size, L × W, mm	190 × 140	220 × 180		
Location	extern or in the filter sump, hang-on, wall mounting			
Materials	PVC, PMMA, NBR o-rings, PA connectors			
Inlet connection	4 mm nozzle			
Outlet connection	Eheim 12/16	10 mm nozzle		
drain	non	valve for PE 6/4 hose		
Build in pump	UP300 (4 W)	UP1000 (10 W)		UP2000 (18 W)
Filter material	sulphur granules (99.8% purity), refillable			
Optimum water flow, l/h	3.3	7.4	11.3	17.3
max. water flow, l/h	13	29	45	69
total weight, kg	3	5	7	11
pH value of water outlet	0.5-1.0 pH steps lower than inlet / carbonate hardness of min. 7°dKH is required! The pH value should not be lower than 8.0. A neutralization filter can be connected downstream.			
Water inlet pump	Circulation pump with ball valve or dosing pump or solenoid valve			
Redox (ORP) probe connector	on request	For all probes with 12 mm diameter (option), order number: Con20x1.5-12mm		
1 liter (approx. 1.2 kg) sulphur granules (99.8% pure), order number: 575-010 25 kg (approx. 21 liters) sulphur granules (99.8% pure), order number 575-250				

\* special sizes are possible! When using redox electrodes, the required height increases by approx. 10 cm

## Technical data of the AquaCare ADN filter: 150 ... 250

Size	ADN150-50	ADN150-70	ADN150-100	ADN 250
Order number	ADN150-50	ADN150-70	ADN150-100	300-025
max. aquarium size	5,400	8,500	13,200	21,000
Diameter, mm	150			250
Sulfur substrate, litres	5.4	8.5	13.3	26
Height total, cm*	50	70	100	77
Minimum space for filter*	+5 cm			
Foot print size, L x W, mm	310 x 280			430 x 400
Location	extern or in the filter sump, hang-on (not d250), wall mounting (not d250)			
Materials	PVC, PMMA, NBR o-rings, PA connectors			
Inlet connection	4 mm nozzle			PVC d20
Outlet connection	12 mm nozzle			PVC d20
drain	valve for PE 6/4 hose			PVC ball valve d20
Build in pump	UP2000 (18 W)	UP2000/1 (33W)		UP3000 (45 W)
Filter material	sulphur granules (99.8% purity), refillable			
Optimum water flow, l/h	16	26	40	60
max. water flow, l/h	64	102	160	300
total weight, kg	12	18	23	45
pH value of water outlet	0.5-1.0 pH steps lower than inlet / carbonate hardness of min. 7°dKH is required! The pH value should not be lower than 8.0. A neutralization filter can be connected downstream.			
Water inlet pump	Circulation pump with ball valve or dosing pump or solenoid valve			
Redox (ORP) probe connector	For all probes with 12 mm diameter (option), order number: Con20x1.5-12mm			
1 liter (approx. 1.2 kg) sulphur granules (99.8% pure), order number: 575-010				
25 kg (approx. 21 liters) sulphur granules (99.8% pure), order number 575-250				

\* special sizes are possible! When using redox electrodes, the required height increases by approx. 10 cm

## Technical de-nitrification filter systems (ADN or Roto-Bio-Reactor) are available, too.

